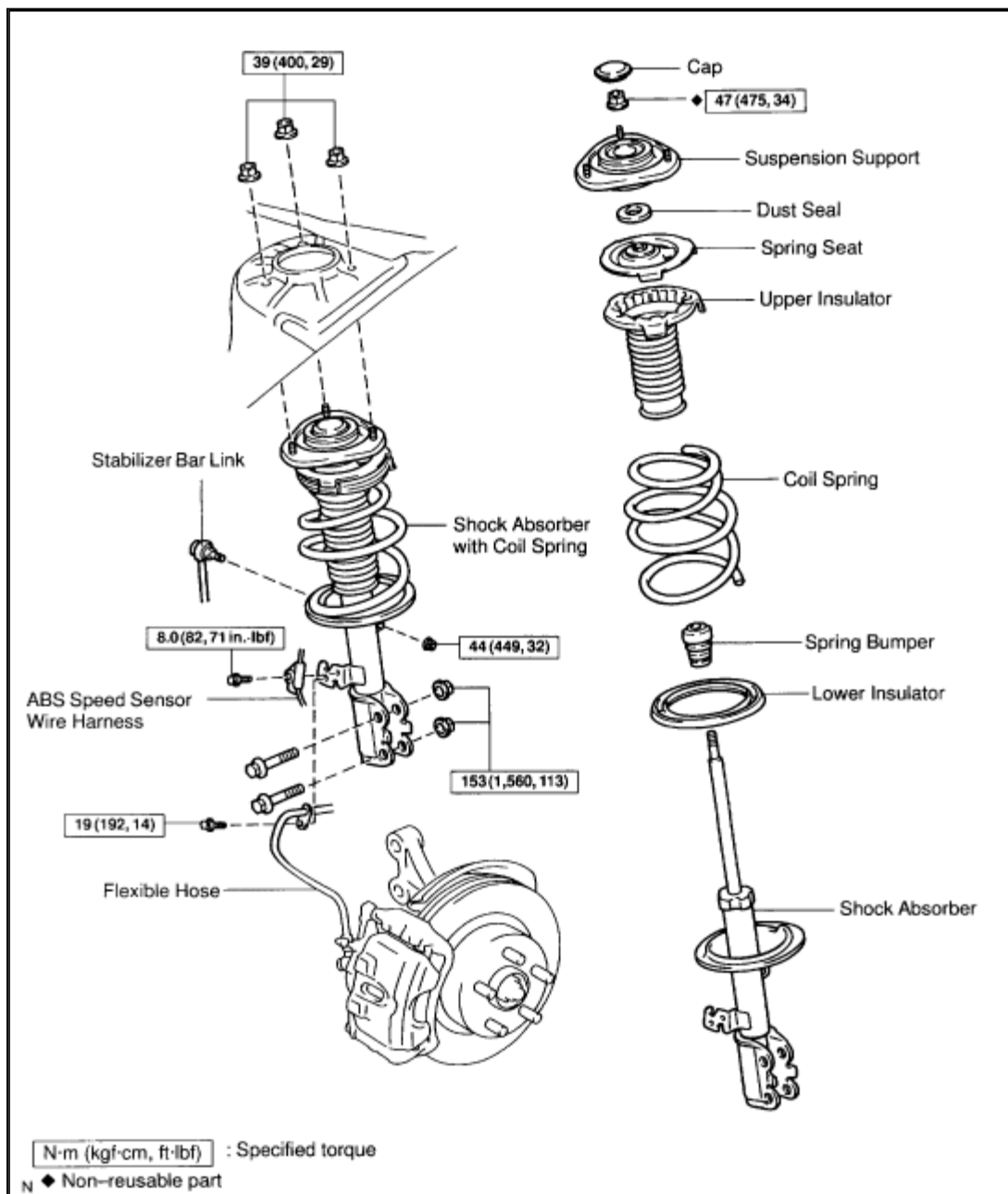


Removal and Installation

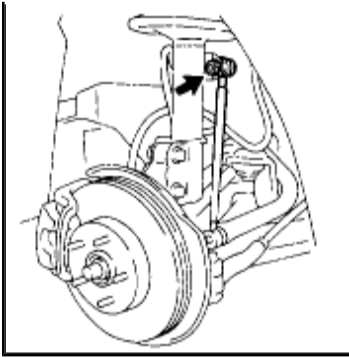


ZOOM

SIZED FOR PRINT

REMOVAL

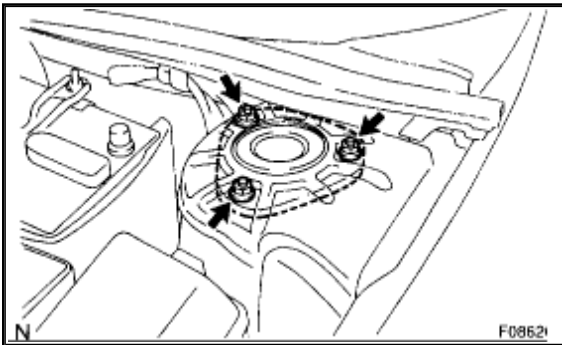
1. REMOVE FRONT [WHEEL](#) Torque: **103 Nm (1,050 kgf.cm, 76 ft. lbs.)**
2. DISCONNECT ABS SPEED SENSOR WIRE HARNESS CLAMPS FROM [SHOCK ABSORBER](#) Remove the bolt and disconnect the ABS speed sensor wire harness clamp. Torque: **8.0 Nm (82 kgf.cm, 71 inch lbs.)**
3. DISCONNECT FLEXIBLE HOSE Remove the bolt and disconnect the flexible hose from the shock absorber bracket. Torque: **19 Nm (192 kgf.cm, 14 ft. lbs.)**



ZOOM

SIZED FOR PRINT

4. DISCONNECT STABILIZER BAR LINK Remove the nut and disconnect the stabilizer bar link from the [shock absorber](#).
Torque: **44 Nm (449 kgf.cm, 32 ft. lbs.)** **HINT:** If the ball joint turns together with the nut, use a hexagon (5 mm) wrench to hold the stud.



ZOOM

SIZED FOR PRINT

5. REMOVE [SHOCK ABSORBER](#) WITH [COIL SPRING](#)
- a. Loosen the 2 nuts on the lower side of [shock absorber](#). Torque: **153 Nm (1,560 kgf.cm, 113 ft. lbs.)** **HINT:** Do not remove the 2 bolts.
 - b. Remove the 3 nuts on the upper side of the [shock absorber](#). Torque: **39 Nm (400 kgf.cm, 29 ft. lbs.)**
 - c. Remove the 2 nuts and bolts on the lower side of [shock absorber](#). **HINT:** At the time of installation, coat the nut's thread with engine oil.
 - d. Remove the [shock absorber](#) with [coil spring](#).

INSTALLATION

Installation is in the reverse order of removal.

HINT: After installation, check the front [wheel](#) alignment.